

PRODUCT INFORMATION PACKET

Model No: 213TTFC6001

Catalog No: GT1015A

7.50 HP General Purpose Motor, 3 phase, 3600 RPM, 230/460 V, 213T Frame, TEFC
General Purpose Motors



Regal and Marathon are trademarks of Regal Rexnord Corporation or one of its affiliated companies.
©2021 Regal Rexnord Corporation, All Rights Reserved. MC017097E



Nameplate Specifications

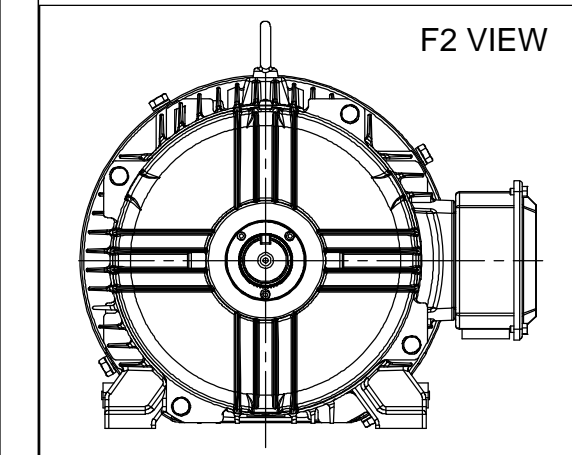
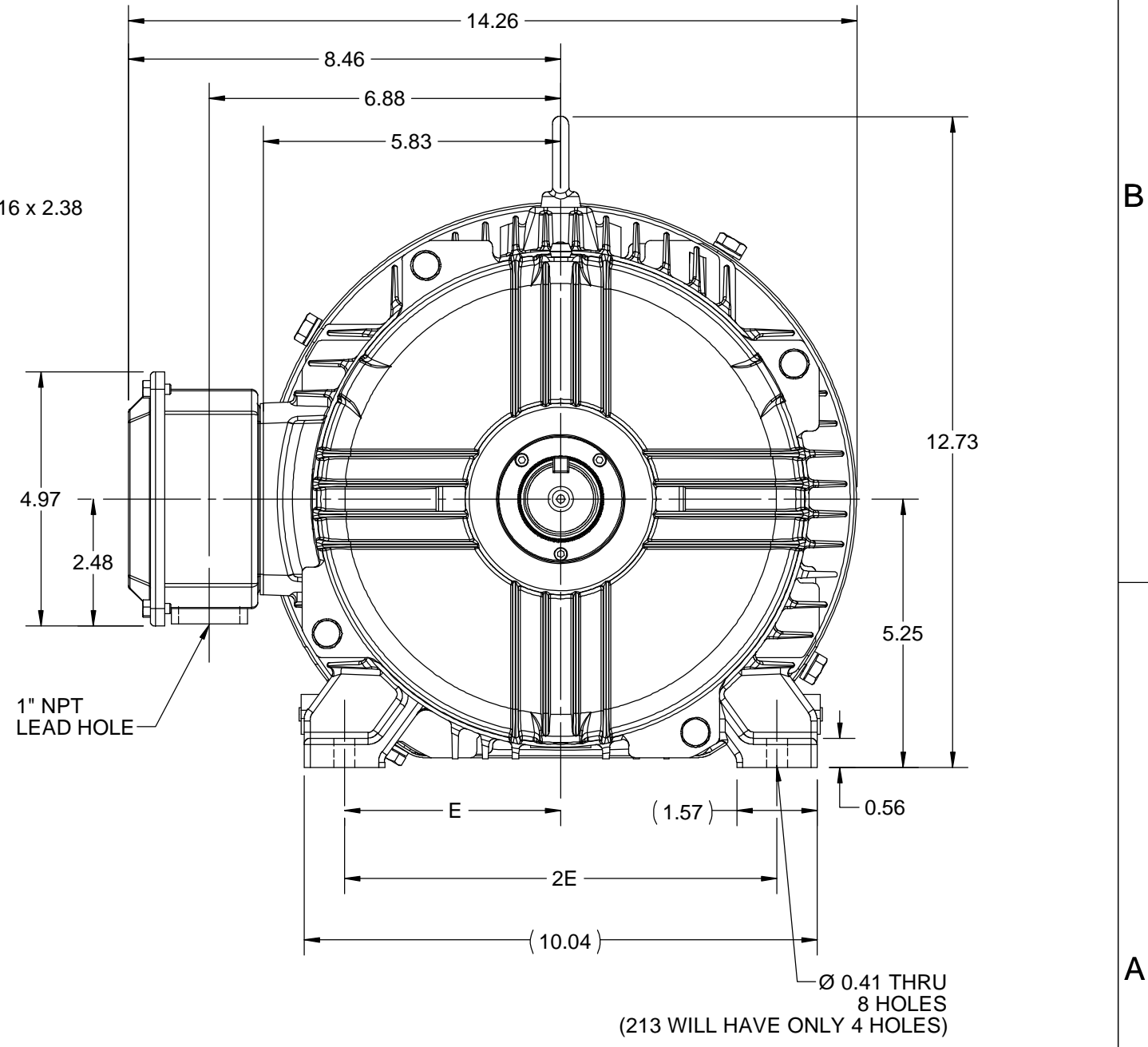
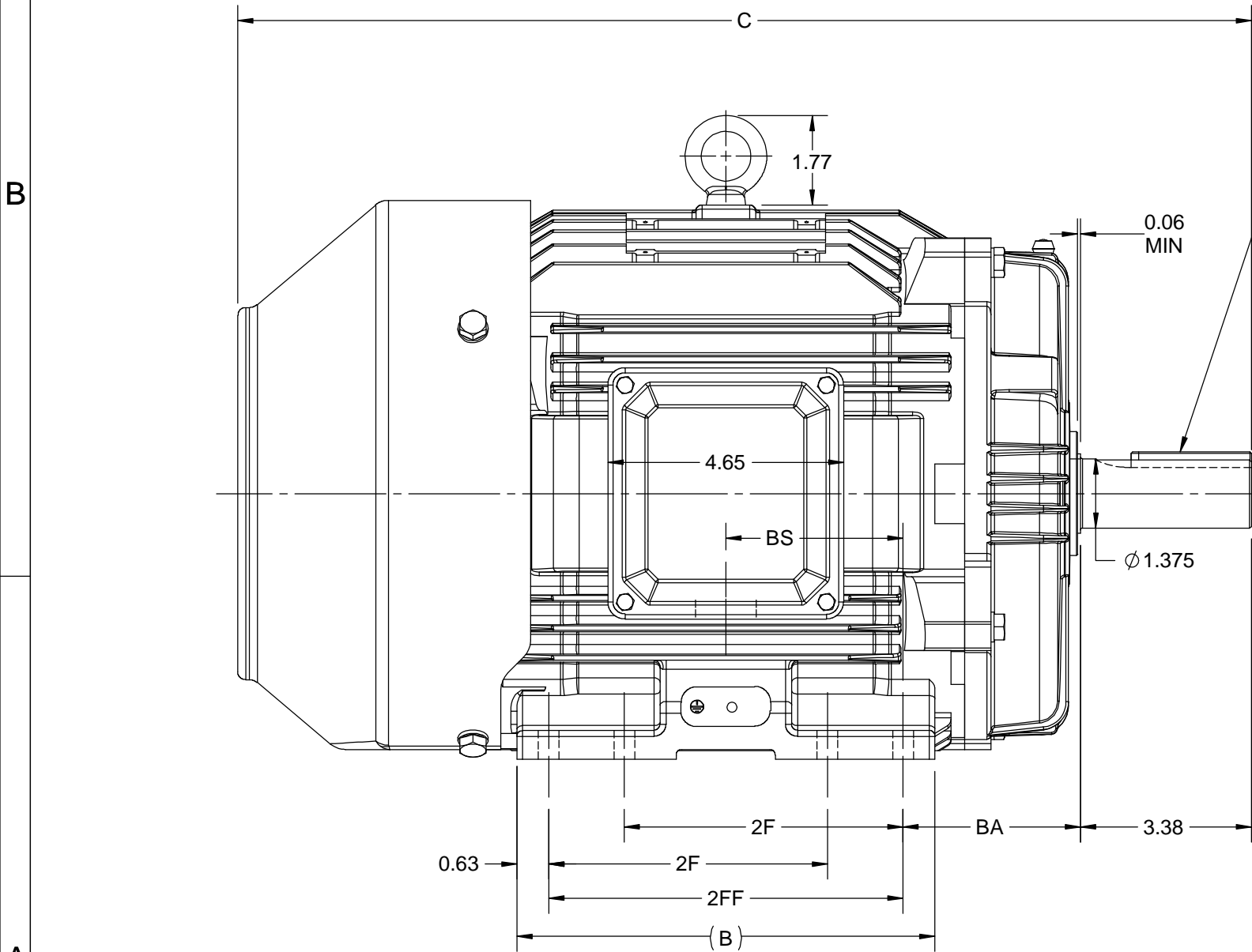
| | | | |
|------------------------|-----------------------|----------------------------|------------------------------------|
| Output HP | 7.50 Hp | Output KW | 5.6 kW |
| Frequency | 60 Hz | Voltage | 230/460 V |
| Current | 18.4/9.2 A | Speed | 3520 rpm |
| Service Factor | 1.15 | Phase | 3 |
| Efficiency | 89.5 % | Power Factor | 84.6 |
| Duty | Continuous | Insulation Class | F |
| Design Code | B | KVA Code | H |
| Frame | 213T | Enclosure | Totally Enclosed Fan Cooled |
| Thermal Protection | No | Ambient Temperature | 40 °C |
| Drive End Bearing Size | 6308 | Opp Drive End Bearing Size | 6208 |
| UL | Listed | CSA | Y |
| CE | Y | IP Code | 55 |
| Hazardous Location | DIVISION 2 T2B | Number of Speeds | 1 |

Technical Specifications

| | | | |
|-----------------------|-------------------------------------|-----------------------|-------------------------|
| Electrical Type | Squirrel Cage Inverter Rated | Starting Method | Line Or Inverter |
| Poles | 2 | Rotation | Reversible |
| Resistance Main | 1.635 Ohms | Mounting | Rigid Base |
| Motor Orientation | Horizontal | Drive End Bearing | Ball |
| Opp Drive End Bearing | Ball | Frame Material | Cast Iron |
| Shaft Type | T | Overall Length | 18.53 in |
| Frame Length | 7.95 in | Shaft Diameter | 1.375 in |
| Shaft Extension | 3.38 in | Assembly/Box Mounting | F1/F2 CAPABLE |
| Inverter Load | CONSTANT 2:1/VARIABLE 10:1 | | |
| Outline Drawing | SS620702-100 | Connection Drawing | EE7308 |

This is an uncontrolled document once printed or downloaded and is subject to change without notice. Date Created:10/06/2021

| DASH NO. | 4 | | 3 | | | | 2 | | 1 | |
|----------|------|-------|------|------|------|------|------|------|----------|----------|
| | B | C | E | 2E | 2F | 2FF | BA | BS | MOUNTING | FRAME |
| 100 | 6.76 | 18.53 | 4.25 | 8.50 | --- | 5.50 | 3.50 | 2.75 | F1 OR F2 | 213T |
| 200 | 8.26 | 20.03 | | | 5.50 | 7.00 | | 3.50 | | 213/215T |



| | | |
|---|--------------------|-------------------------------|
| DRAWING REVISION C | REVISION BY VS | REV DATE/© DATE 30-09-2020 |
| ECO ECO-0194527 | APPROVED BY GNK | DATE 30-09-2020 |
| ECO DESCRIPTION UPDATED DRAWING COPYRIGHT (PER REVISION DATE) REGAL BELOIT AMERICA, INC. ALL RIGHTS RESERVED. PROPRIETARY AND CONFIDENTIAL INFORMATION - THIS DOCUMENT IS THE PROPERTY OF REGAL BELOIT AMERICA, INC. ("OWNER") AND CONTAINS OWNER'S PROPRIETARY INFORMATION. ANY PERSON, CORPORATION OR OTHER FIRM RECEIVING IT IS DEEMED, BY RECEIVING IT, TO AGREE THAT IT, AND/OR ANY PART OF IT, SHALL NOT BE DISCLOSED TO ANY PERSON, CORPORATION OR OTHER ENTITY, DUPLICATED, AND/OR USED, EXCEPT AS EXPRESSLY APPROVED IN WRITING IN ADVANCE BY OWNER. THIS DOCUMENT SHALL BE RETURNED TO OWNER UPON REQUEST. IT MAY BE SUBJECT TO CERTAIN RESTRICTIONS UNDER APPLICABLE EXPORT CONTROL LAWS AND REGULATIONS. | | |

PRIMARY DIMENSIONS ARE INCH
mm DIMENSIONS IN [BRACKETS]
ARE FOR REFERENCE ONLY

| |
|------------------------|
| DRAWN BY JOY |
| DATE 04/05/2015 |
| APPROVED BY SBD |
| DATE 04/05/2015 |
| REFERENCE |
| THIRD ANGLE PROJECTION |

| | |
|--|-----------------------------------|
| REGAL ® Regal Beloit America, Inc. | |
| DESCRIPTION OUTLINE 213/215T FR TEFC- CAST IRON | |
| MATERIAL | PROCESS/FINISH |
| SIZE B | DRAWING NUMBER SS620702 |
| SHEET 1 OF 1 | |



| | | | | TOLERANCES UNLESS SPECIFIED | | Regal Beloit America, Inc. | | DRAWN RM 11/20/1990 | | |
|--|--|-----------|------------|--------------------------------|-----------------|-----------------------------------|--------------------------|---------------------|--------------------|-----------|
| | | | | DEC. | INCHES | | | CHK ML 11/21/1990 | | |
| 5 | CHG TO REGAL LOGO | SL | 09/10/2015 | AB | | | | APPD SAS 04/24/2003 | | |
| 4 | REVISED IEC NOTATIONS | MSG | 11/15/2011 | CMN | .X | ±.1 | | SCALE 1=1 | | |
| 3 | ADDED IEC NOTATIONS... (U1), (V1) ETC. MU95194 | MSG | 5/10/2010 | MJS | .XX | ±.02 | TITLE CONNECTION DIAGRAM | REF | | |
| 2 | ADDED THE OPTIONAL CORD CONNECTION MU46318 | RDH | 04/24/2003 | DRS | .XXX | ±.005 | 3Ø - DUAL VOLTAGE MOTOR | FMF | | |
| 1 | REDRAWN | RM | 11/20/1990 | | .XXXX | ±.0005 | MAT'L. | PREV | | |
| NO. | REVISION | BY & DATE | | CHK | ANG | ±7'30" | FINISH | | | |
| THIS DRAWING IN DESIGN AND DETAIL IS OUR PROPERTY AND MUST NOT BE USED EXCEPT IN CONNECTION WITH OUR WORK ALL RIGHTS OF DESIGN AND INVENTION ARE RESERVED THIS IS AN ELECTRONICALLY GENERATED DOCUMENT - DO NOT SCALE THIS PRINT | | | | RFP | CAD FILE ee7308 | | | SIZE A | DRAWING NO. EE7308 | PAGE OF 5 |
| | | | | DIST | WP | | | | | |



**P.O. BOX 8003
WAUSAU, WI 54401-8003
PH. 715-675-3311**

CERTIFICATION DATA SHEET

CUSTOMER:

CUSTOMER PO#:

ORDER #:

MODEL #: 213TTFCD6001 AA

CONN. DIAGRAM: EE7308

CUSTOMER PART

#:

OUTLINE: SS620702

MOUNTING: F1/F2 CAPABLE

WINDING #: HE31322011 2

TYPICAL MOTOR PERFORMANCE DATA

| HP | kW | SYNC. RPM | F.L. RPM | FRAME | ENCLOSURE | KVA CODE | DESIGN |
|---------|-----------|-----------|-----------|-------|-----------|----------|--------|
| 7 1/2&5 | 5.60&3.70 | 3600 | 3520&2935 | 213T | TEFC | H | B |

| PH | Hz | VOLTS | AMPS | START TYPE | DUTY | INSL | S.F. | AMB°C |
|----|-------|-----------------|-----------------|------------------|------------|------|-----------|-------|
| 3 | 60/50 | 230/460&190/380 | 18.4/9.2&15/7.5 | LINE OR INVERTER | CONTINUOUS | F7 | 1.15/1.15 | 40 |

| FULL LOAD EFF: | 89.5&87.5 | 3/4 LOAD EFF: | 89.9 | 1/2 LOAD EFF: | 86.9 | GTD. EFF | | ELEC. TYPE | |
|----------------|-----------|---------------|------|---------------|------|----------|--|-------------------|--|
| FULL LOAD PF: | 86.5&84.5 | 3/4 LOAD PF: | 81.9 | 1/2 LOAD PF: | 73 | 88.5 | | SQ CAGE INV RATED | |

| F.L. TORQUE | LOCKED ROTOR AMPS | L.R. TORQUE | B.D. TORQUE | F.L. RISE°C |
|-------------|-------------------|----------------|----------------|-------------|
| 11.2 LB-FT | 120 / 60 | 20 LB-FT 179 % | 32 LB-FT 286 % | 50 |

| SOUND PRESSURE @ 3 FT. | SOUND POWER | ROTOR WK^2 | MAX. WK^2 | SAFE STALL TIME | STARTS / HOUR | APPROX. MOTOR WGT |
|------------------------|-------------|-------------|------------|-----------------|---------------|-------------------|
| 72 dBA | 82 dBA | 0.5 LB-FT^2 | 12 LB-FT^2 | 20 SEC. | 2 | 146 LBS. |

***** SUPPLEMENTAL INFORMATION *****

| DE BRACKET TYPE | ODE BRACKET TYPE | MOUNT TYPE | ORIENTATION | SEVERE DUTY | HAZARDOUS LOCATION | DRIP COVER | SCREENS | PAINT |
|-----------------|------------------|------------|-------------|-------------|--------------------|------------|---------|---------------|
| STANDARD | STANDARD | RIGID | HORIZONTAL | FALSE | DIVISION 2 T2B | FALSE | NONE | BLUE (ENAMEL) |

| BEARINGS | | GREASE | SHAFT TYPE | SPECIAL DE | SPECIAL ODE | SHAFT MATERIAL | FRAME MATERIAL |
|----------|------|------------|------------|------------|-------------|-------------------------|----------------|
| DE | ODE | | | | | | |
| BALL | BALL | POLYREX EM | T | NONE | NONE | 1045 HOT ROLLED (C-204) | CAST IRON |
| 6308 | 6208 | | | | | | |

| THERMO-PROTECTORS | | | | THERMISTORS | CONTROL | SPACE HEATERS |
|-------------------|------------|----------|----------|-------------|---------|---------------|
| THERMOSTATS | PROTECTORS | WDG RTDs | BRG RTDs | | | |
| NONE | NOT | NONE | NONE | NONE | FALSE | NONE VOLTS |

*
N
O
T
E
S
*

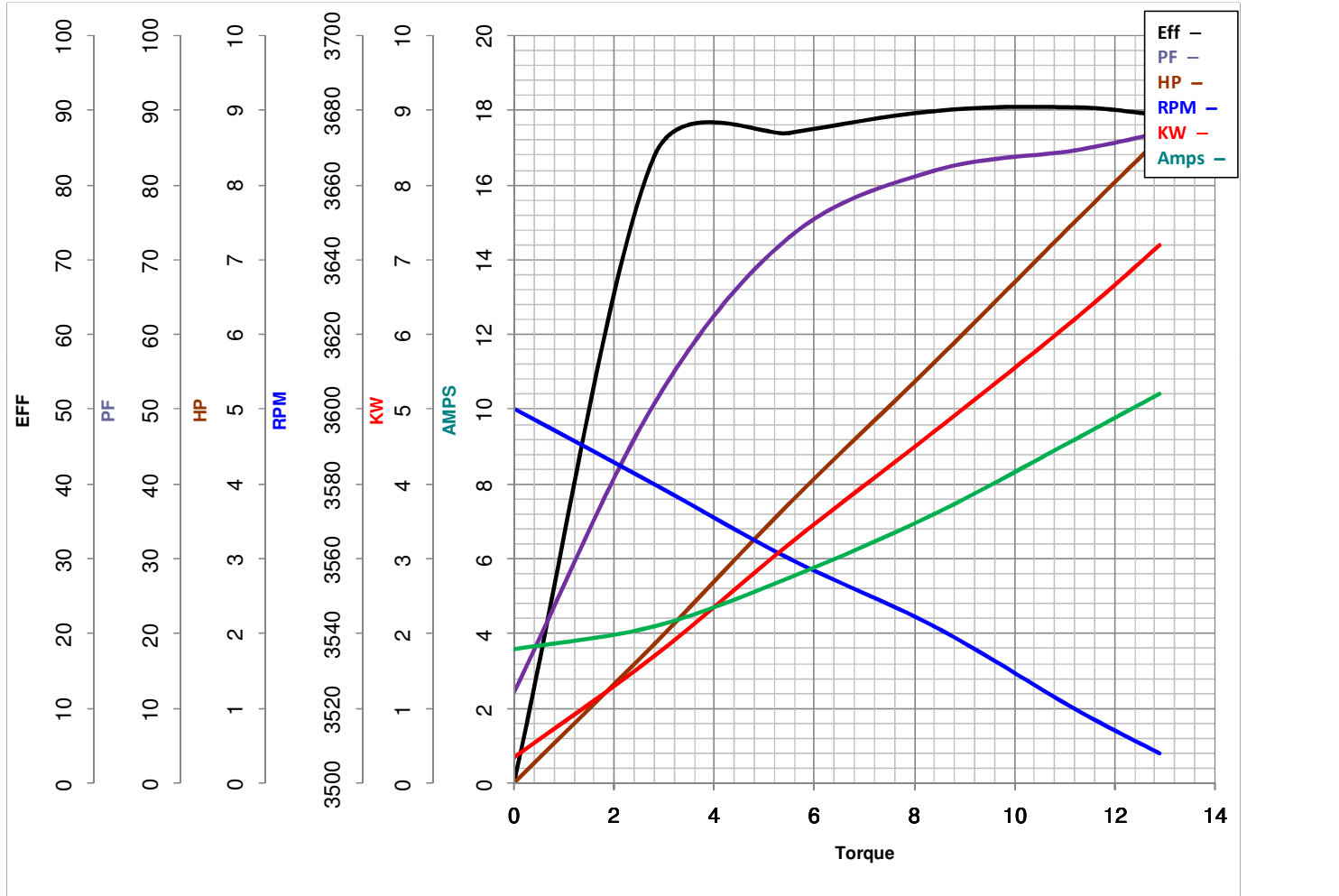
| |
|---|
| INVERTER TORQUE: CONSTANT 20:1/VARIABLE 20:1 INV. HP SPEED RANGE: NONE |
| ENCODER: NONE NONE NONE NONE NONE PPR |
| BRAKE: NONE NONE NONE P/N NONE NONE NONE NONE FT-LB NONE V NONE Hz |

PREPARED BY: Anusha Muthyala
DATE: 05/04/2018 02:19:36 AM
FORM 3531 REV.3 02/07/99
** Subject to change without notice.

MARATHON ELECTRIC CORPORATION

TYPICAL PERFORMANCE CURVE for AC MOTOR

Customer _____ Curve at 460 Volts HP 7.5&5 PHASE 3
 Model No 213TTFC6001 60 HZ
7.5 HP VOLTS 230/460&190/380
 Catalog No GT1015A HZ 60&50 RPM 3520&2935



Torque in Lb.Ft

| | | | | |
|-----------|-------------|-------|-----------|-------------------|
| FL TORQUE | <u>11.2</u> | Lb.Ft | FL AMPS | <u>18.4/9.2</u> |
| BD TORQUE | <u>32.0</u> | Lb.Ft | PU TORQUE | <u>17.5</u> Lb.Ft |
| LR TORQUE | <u>20</u> | Lb.Ft | LR AMPS | <u>60</u> |

WINDING HE31322011-2 Prepared By ANUSHA M Date 5/4/2018